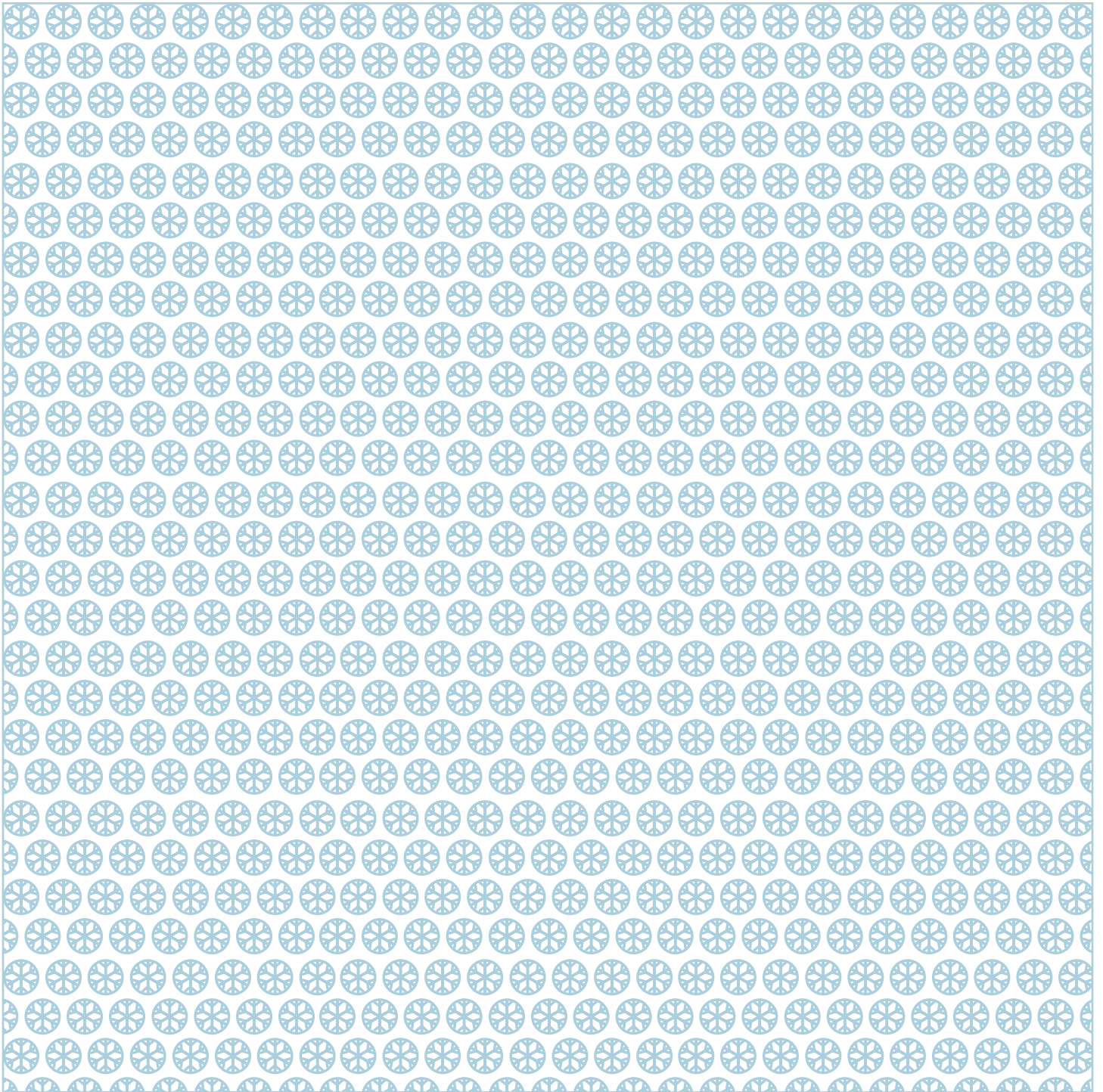


12 WEEKS OF
Christmas
STAR ORNAMENTS

STAR SIZE: LARGE

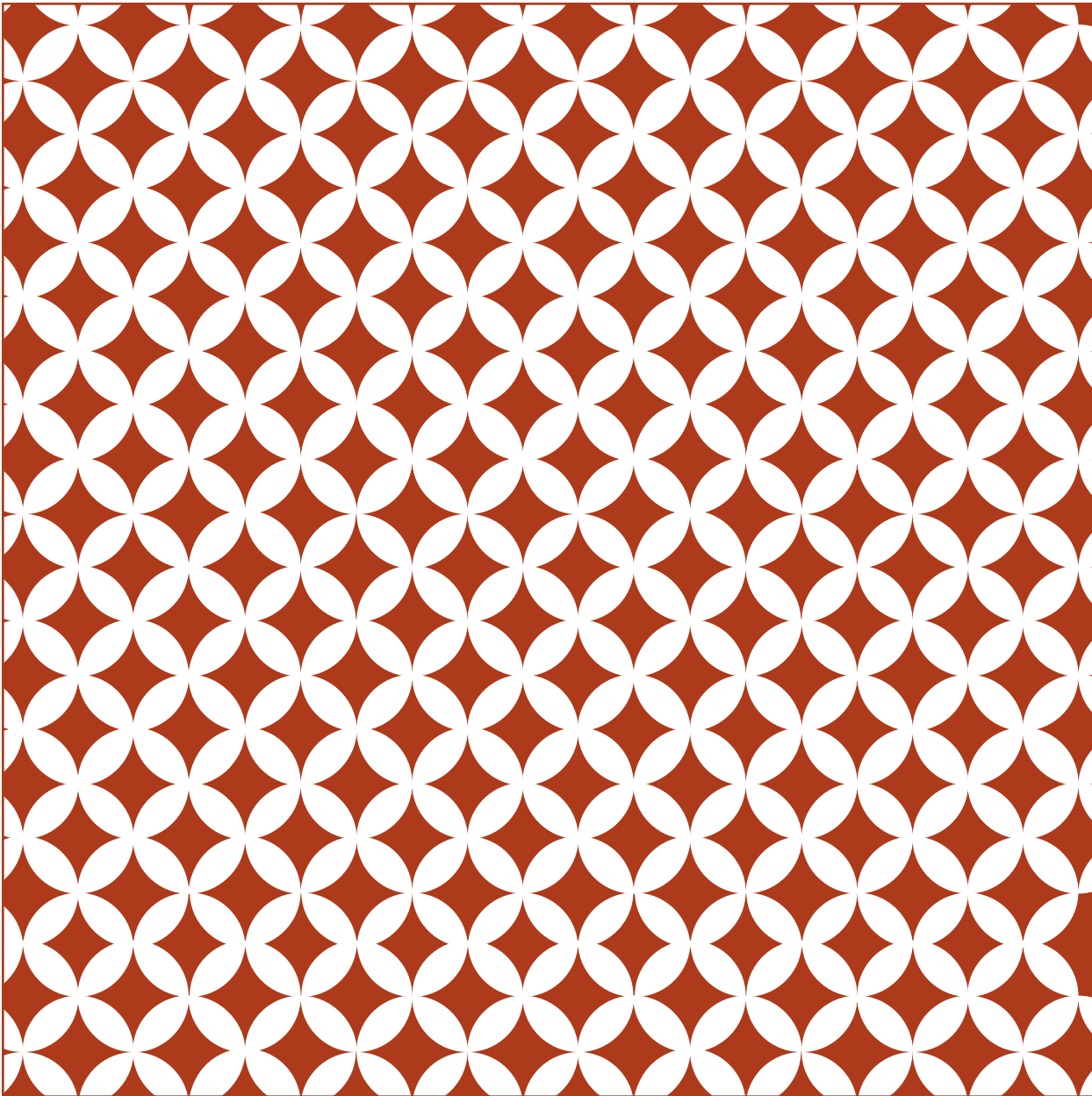
Cut the pattern square out and follow the tutorial on our blog for cutting and folding directions



12 WEEKS OF
Christmas
STAR ORNAMENTS

STAR SIZE: MEDIUM

Cut the pattern square out and follow the tutorial on our blog for cutting and folding directions



12 WEEKS OF
Christmas
STAR ORNAMENTS

STAR SIZE: SMALL

Cut the pattern square out and follow the tutorial on our blog for cutting and folding directions

